



insight
MEMORY CARE
CENTER



2017

This is our story.

It's a collection of stories.



September 2016



August 2016




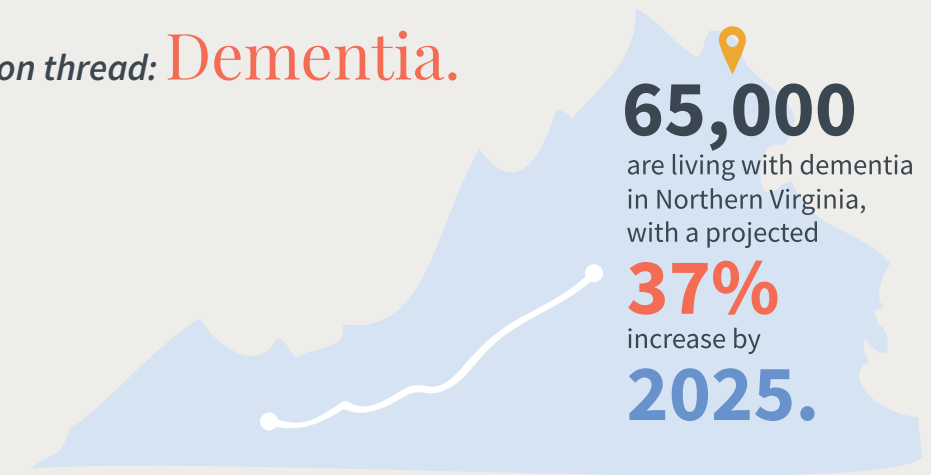
August 2016



May 2017

The stories all have a common thread: **Dementia.**

1 in 10

people over 65
 have Alzheimer's.



Fortunately, there is one more common thread: **Insight.**

Insight Memory Care Center is a nonprofit adult day health and resource center providing specialized care, support, and education to families across Northern Virginia. The chart below details the number of individuals served in FY17.

Care	Support	Education
Day Center 124	Support Groups 325	Classes 2185
Mind & Body 26	Consultations 135	Prof. Seminars 200
Reconnections 25	Memory Cafe 26	CDP Training 80
	SHARE Program 24	
FY17 Total		3150

Our holistic approach to care provides programming for both individuals with the disease and their care partners, across the disease spectrum. Using our expertise in dementia care, we can provide families with the programs, services, and resources they need to remain at home, in the community.

We connect the dots •

“ He couldn’t remember how to get places he’d always been, he was getting over-excited about losing things – something was just wrong. ”

“ My father just wasn’t as sharp as he used to be. He seemed not to be part of our conversations, he was more forgetful. He seemed sometimes disoriented, he was repetitive. So was it depression, was it normal aging, was it hearing loss, was it everything? ”

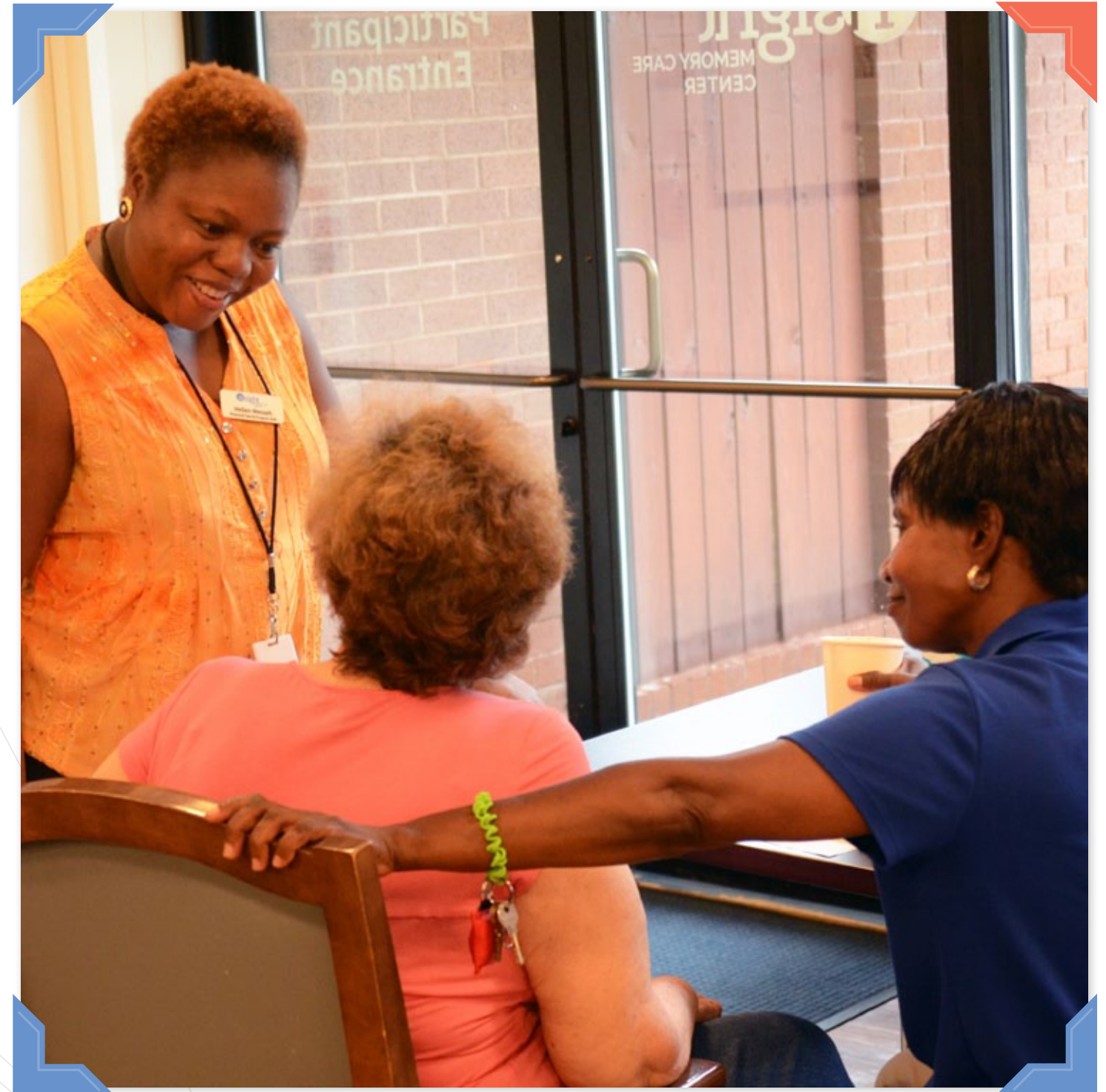
“ I sensed that she wasn’t as comfortable alone. That’s the point we knew we needed a change. ”

“ We have been so entrenched in caring for her that we really don’t know any other life. My father, the primary caregiver, suffered a heart attack last year partly due to the stress of caring for my mother. ”

“ I realized that the thing I couldn’t provide for him was a lot of stimulation that he really needed on a daily basis, so we sought out Insight. ”

“ It was such a relief when I came to the first meeting. ”

“ There was something wrong with mom. We found bills that she hadn’t paid, or double paid. People that called themselves her friends were taking advantage of her. ”



“ When I walked in, I immediately knew this was the right place... it felt like home. ”



“ Since his Alzheimer’s disease has progressed, as it inevitably does, he has moved from the early stage program to the full day program which provides structure and stimulation for him and respite time for me to attend to my aging parents and our new granddaughter. ”

“ It gives me a place to talk about what’s going on, to ask, a place to share information because some of the people that are further down this road than I am have learned things, and some of the speakers that you’ve brought in that are professionals in this field have been very, very helpful. ”

“ It matters to come here because you know that the people who are taking care of your loved one get it, and they get you. It’s a collaborative effort, and that’s what I appreciate the most about it. ”

Care

Mind and Body Workshop

Our Mind and Body Workshop sessions were updated to utilize different topics to promote cognitive enhancement, creative expression, movement, community engagement, and well-being for families living with early memory loss.

Reconnections

Together with professional staff, 25 Reconnections members participated in a variety of recreational activities with the opportunity for peer support and socialization in a safe, non-judgmental setting.

SHARE Program

Insight became one of the first in the country to offer the SHARE program, a research-tested program developed by dementia experts through funding from the National Institute on Aging that provides families with a recent dementia diagnosis a viable way to plan for future needs.

Adult Day Health Center

On our annual monitoring visit from the Virginia Department of Social Services in March 2017, we had a completely deficiency free report to renew our three-year license for our day center – the highest level of licensure for adult day health services in Virginia.

Insight continued our process of incorporating more person-centered care best practices into the day center to ensure each individual is provided care tailored to their specific needs, likes, and interests. This is part of an on-going process to continue to provide the best quality of life we can for our participants.

Insight provided over \$235,000 in financial assistance to 27 participants and their families during FY17.

Support

Support Groups

We offered four different support groups throughout the year to best meet the needs of different caregiving situations. 325 caregivers attended a total of 60 support group sessions during the fiscal year.

Memory Cafe

The Memory Café was revised to mirror the popular Mind and Body format, offering group activities, a separate support group for caregivers, and a joint dinner at the conclusion. The Memory Café is free, open to everyone, and now offered twice a month; 26 individuals participated over the past year.

Caregiver Cruise

Insight took our third Caregiver Cruise in June of 2017. Eight families took part in the 5 day cruise from New Jersey to Bermuda, allowing all of the families to enjoy a vacation together in a safe and supportive environment.

Education

Classes for Caregivers

Insight participated in providing a total of 82 free education programs for caregivers in Northern Virginia. Topics covered a wide range of caregiving issues, and brought in experts in their respective fields. New Wellness Workshops and Conversations with Caregivers sessions were added to provide additional caregiver support programming.

Professional Training

Our Assistant Director took comprehensive training to become a Certified Alzheimer’s Disease and Dementia Care Trainer. She has since trained all Insight staff members through the Certified Dementia Practitioner course, and offered the course to 80 professionals in the community.

86 volunteers and interns provided 6,158 hours of service during the fiscal year. We are very grateful to partner with several universities to provide students with practical learning experience.

You make it happen.

Many thanks to our donors!

Aarondale Retirement Community ●
 Act For Alexandria ●
 Ruth Altheim ●
 Always Best Care
 Alzheimer's Foundation of America ●
 Noelle Andreano and Daniel Pelsinger
 Richard and Rosemarie Andreano ●
 Anonymous ●
 Arbor Terrace Fairfax ●
 Arden Courts Fair Oaks ●
 Arden Courts of Annandale ●
 Robert D. Baldwin ●
 James and Jean Ball
 Michael Bell ●
 Bob and Judy Benton
 Galeet BenZion
 Reagan and Ellen Black
 Frank Blechman
 Booz Allen Hamilton
 Ronald A. Boyle
 Brightview Great Falls
 Brightview Woodburn Assisted Living ●
 Marion Burton
 Rabab Butti ●
 June Callahan
 Capital Caring ●
 Care With Love Senior Home Care
 Barbara Ann Carrington ●
 Cassaday and Company
 Catalogue For Philanthropy Greater Washington
 Michael L. Cauldwell ●
 Susan Cherney
 Pamla Clark ●
 Clark-Winchcole Foundation ●
 Joann Clegg
 Clinical Care House Calls Of NoVA, PLLC
 Mary Kay Crain
 Creative Cauldron
 Susan B. Crim and Sylvia Smith
 Nancy Crowley
 David Danner
 Ellen Dooley
 Eleanor Duffield

Jeffrey and Adrianna Duggan
 Episcopal Church Women of the Church of the Holy Comforter ●
 Karen and John Fagelson ●
 Peter Fairman
 Andrew B. Falck
 Sandra Fields
 Elisabeth Fopp ●
 Joan C. Forte ●
 Gail Foster
 Friends of Marcus Simon for Delegate ●
 Lyn and Scott Geboy ●
 Bruce Ghrist
 Golden Pond ElderCare Strategies
 Goodwin House, Inc. ●
 GraceFul Care, Inc.
 Great Falls Assisted Living ●
 Judy Grumbly ●
 James R. Hamrick ●
 Paul Hannan
 Denise Hedrick
 Roger A. Hess
 Home Instead Senior Care
 Michelle Lynette Hughes
 IBM Employee Services Center
 Bill and Linda Idol
 Carrie Idol-Richards and Jason Richards
 Independent You ●
 Anita and Dennis Irvin
 Lynette K. Jacob
 Gloria Bixin Jiang
 Cathy Johnson
 Valerie Joseph
 Jeff Kost ●
 Alexander Kuczowski
 Patricia Kuczowski
 Pearlbea LaBier
 Courtney Lavander
 James Lawless ●
 William Laxton
 Paul Lengi
 Sam Long
 Mary Mahling Carns
 Karen Marshall
 Roseann Mazaka
 Linda Mazaway ●
 Mary McClelland
 Gail McGlothlin ●

Robin and Jake McGlothlin
 Judy Mitnick
 My Tribute Gifts Foundation
 Simonetta Nardin
 Needham Mitnick & Pollack, PLC
 NeoSystems Corporation
 Neuropsychology Associates of Fairfax
 Edward Newberry ●
 William E. Offutt
 Old Dominion Home Care ●
 Ann O'Neil and Lennox Shelton ●
 Pat O'Neill
 Edward Fortunato
 Mitch and Claudia Pelsinger
 Patrick Peterson ●
 Susan Peterson
 David Pohly
 Gail Pritchard
 Pro-Healthcare Servicing ●
 Carrie Puterbaugh
 Steven Puterbaugh ●
 Patrick Retton ●
 Judith Assmus Riggs ●●
 Right At Home ●
 Michael and Courtney Robinson
 Charles and Rebecca Rogers
 Carrie Romano ●
 Rotary Club Of Tysons Corner Foundation ●
 Nynette Rourke
 John and Gloria Runyon
 Colleen Ryan Mallon ●
 Leslie Sarapu ●
 Charles W. Schudt ●
 Carol Schwartz
 Nancy Scott
 Robert Seiler ●
 Donald Sender
 Dean Shahinian
 Nancy Shands
 Signature Estate & Investment Advisors, LLC ●
 Howell Simmons
 Nigel and Linda Smyth
 John R. Soltys
 Stay Well Home Health Care ●
 Steele Family Foundation ●
 Irene Stith-Coleman ●
 Sunrise of Springfield ●

Synergy HomeCare ●
 David Taylor
 The Benevity Community Impact Fund
 The Crossings at Chantilly ●
 The Elder and Disability Law Center ●
 The Helen M. Jones Charitable Trust
 The Law Office of Betsy Sue Scott
 The Max and Victoria Dreyfus Foundation, Inc. ●
 The Medical Team
 Thrive At Home ●
 Tribute At Heritage Village
 Tribute At One Loudoun
 Tribute At The Glen ●
 David Turch
 United Way Of The National Capital Area ●
 Raymond and Ann Vickery
 Vinson Hall Retirement Community
 Gretel Von Pischke ●
 Colleen and Kevin Walker ●
 Angela Walsh
 Washington Forrest Foundation ●
 Stephen and Cynthia Weidman
 Williams Industries, Inc.
 Marie J. Woodard
 William and Ingrid Wooten
 Elizabeth and John Yeary
 Edwin Young ●
 Vance S. Zavela and Jean Schiro-Zavela ●

Donors listed have donated \$250 or more between July 2016 and June 2017.

● Orange circles indicate patrons who have given \$1000 or more.

● Red circles indicate IMCC's monthly givers.

“The neurologist says that she notices. Without you, mom would be a lot worse that she is where she is, and that she has not gone down faster because of her coming here. It's keeping her mind active, it's keeping her body active, it's giving her something to look forward to.”



Financials

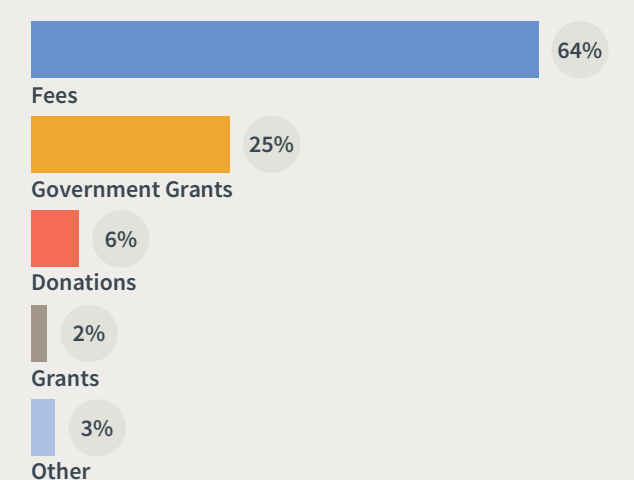
Assets

Cash and Cash Equivalents	\$1,361,521
Accounts Receivable	\$7,830
Pledges Receivable	\$8,743
Prepaid Expenses	\$60,327
Total Current Assets	\$1,438,421
Property and Equipment	\$650,321
Other Assets (Security Deposit)	\$61,025
Total Assets	\$2,149,767

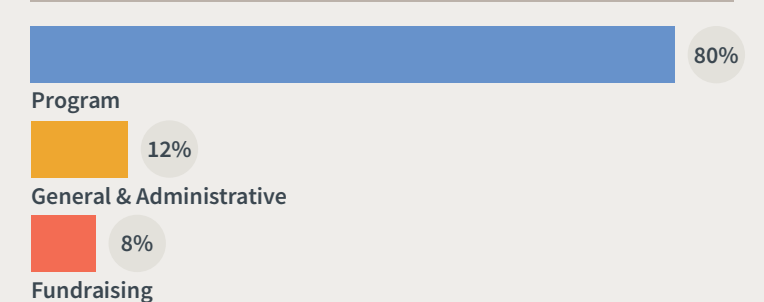
Liabilities

Accounts Payable	\$25,198
Accrued Salaries and Vacation	\$81,265
Deferred Income	\$24,200
Notes Payable	\$56,816
Total Current Liabilities	\$187,479
Long-Term Liabilities	\$358,624
Total Net Assets	\$1,603,664
Total Liabilities and Net Assets	\$2,149,767

Income



Expenses



Our story isn't over.

We can do more.

Our programming works.

Outside research has shown the efficacy of adult day services and caregiver support programs. Our family members echo these findings in our annual survey results.

Care Programs

- 100%** agree the Day Center has been helpful.
- 100%** agree their loved one functions better on days they attend Reconnections.
- 98%** agree that activities are therapeutic for their loved one.
- 87%** agree that attendance at Insight prevented or postponed a move to a residential facility.

Caregiver Support Services

- 100%** agree that support services help manage caregiver stress.
- 94%** agree that education programs improved their caregiving skills and knowledge.
- 98%** feel more able to cope with caregiving with Insight.
- 98%** agree that the program has helped take care of their own needs while caregiving.

We want to grow to meet the need.

Insight has plans to expand our programming, through partnerships or additional locations. Additional space will provide more options for early stage programs, expand adult day health center capacity, and provide education and support options throughout the metro region.



“ In all honesty I could not have gotten through this dementia journey without Insight. ”

• Together.



September 2016



October 2016



May 2017



more stories to come...



insight
MEMORY CARE
CENTER

America's Charities®
MEMBER

CFC
#35282

703-204-4664 InsightMCC.org

IMCC sincerely appreciates funding
from Fairfax County Government.